

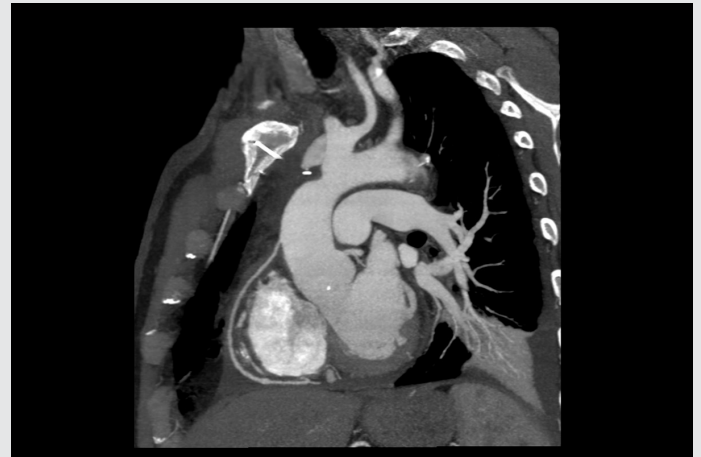
FACT SHEET:

CT Cardiac Calcium Score



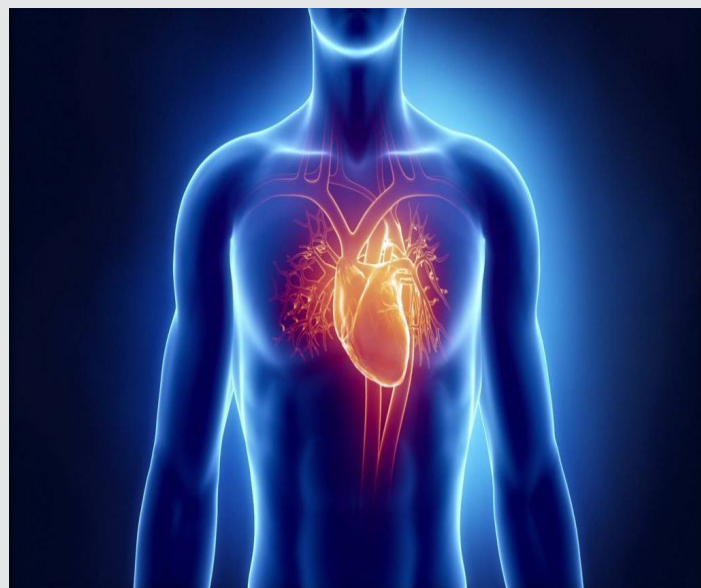
What is CT Cardiac Calcium Score?

CT Cardiac Calcium score is a non-invasive test used to provide an estimation of the amount of coronary artery plaque a patient may have by identifying the extent of calcified coronary artery plaque using a CT scanner. This examination can help assess the risk of a possible cardiac event within five years – the more plaque the higher the risk of an adverse cardiac event. CT Coronary Calcium score generates a numerical score, which has been shown to be much more accurate at predicting risk than standard risk factors (blood pressure, cholesterol, diabetes, age).



Who should have a CT Cardiac Calcium score done?

A CT Calcium score study is generally used to assess asymptomatic patients with moderate risk of coronary heart disease. CT Calcium score is not suitable for patients with established coronary disease, clinical history of heart attack or stent insertion.



Important preparation for the procedure

Cease all caffeine from 8pm the night before your scan

For our staff to be able to successfully perform the CT Calcium score your heart rate must be less than 65 beats per minute.

Please have your referring Doctor check your heart rate and, if necessary, assess your suitability to take temporary medication to lower your heart rate, if required.

Your heart rate will be checked once you arrive for your test and, if it is greater than 65 beats per minute, the test will be unable to be performed.

What is the cost of a CT Cardiac Calcium score?

CT Calcium score studies have no Medicare eligibility. Patients attending for this examination will incur a \$125 fee.